



A guide for fruit fly infested fruit for packhouse delivery inspections and grading on the packline

Aruna Manrakhan, Tim Grout and Peter Stephen
Citrus Research International (CRI)

In the new fruit fly (FF) management system for export of fresh citrus produced in South Africa to the EU (Citrus FFMS), packhouse delivery inspection and packhouse grading are required for mitigating risk of FF in citrus other than lemons and limes. In the packhouse delivery inspection, a sample of fruit per orchard as prescribed by the Citrus False codling moth Management System (Citrus FMS) must be inspected for FF infestation. A fruit must be recorded as infested if FF eggs or live FF larvae are found in the fruit. In the packhouse grading, citrus fruit must be thoroughly graded on the packing line to remove fruit with blemishes that may be associated with FF infestation.

For the packhouse delivery inspection and packhouse grading, a chart is attached to this Cutting Edge in order to aid in identification of fruit with signs of FF infestation and/or presence of FF eggs and live larvae. This chart can be used for training of inspectors and graders and can be placed in the inspection and grading areas as a reference point. The cardboard chart is also available for order from Citrus Research International (CRI) as follows:

In A3- R60

In A4- R23

Excluding the cost of packaging and transport.

Please contact Bella Thulare for order (bella@cri.co.za; 0137598000).

For further queries contact Aruna Manrakhan (aruna@cri.co.za; 0137598000).



'n Gids vir vrugtevlieg besmette vrugte vir pakhuis afleweringinspeksies en gradering op die paklyn

Aruna Manrakhan, Tim Grout en Peter Stephen
Citrus Research International (CRI)

In die nuwe vrugtevlieg (VV) bestuursstelsel vir uitvoer van vars sitrusna die EU (*Citrus FFMS*), wat in Suid-Afrika geproduseer is, word pakhuis afleweringinspeksies en pakhuis gradering vereis om die risiko van VV in sitrus, uitgesluit suurlemoen en lemmetjies, te verminder. In die pakhuis afleweringinspeksie, moet 'n monster van vrugte per boord, soos deur die *Citrus False codling moth Management System (Citrus FMS)* voorgeskryf, vir VV besmetting geïnspekteer word. 'n Vrug moet as besmet aangeteken word indien VV eiers of lewendige VV larwes in die vrugte gevind word. In die pakhuis gradering moet sitrusvrugte deeglik op die paklyn gegradeer word om vrugte met letsels wat met VV besmetting geassosieer kan word, te verwyder.

Vir die pakhuis afleweringinspeksie en pakhuis gradering, word 'n foto-kaart aan hierdie Snykant geheg om te help met die identifisering van vrugte met tekens van VV besmetting en/of teenwoordigheid van VV eiers en lewendige larwes. Hierdie kaart kan gebruik word om inspekteurs en gradeerders op te lei en kan in die inspeksie- en graderings-areas as 'n verwysingspunt geplaas word. Die foto-kaart kan ook van Citrus Research International (CRI) bestel word en is beskikbaar as:

A3- R60

A4- R23

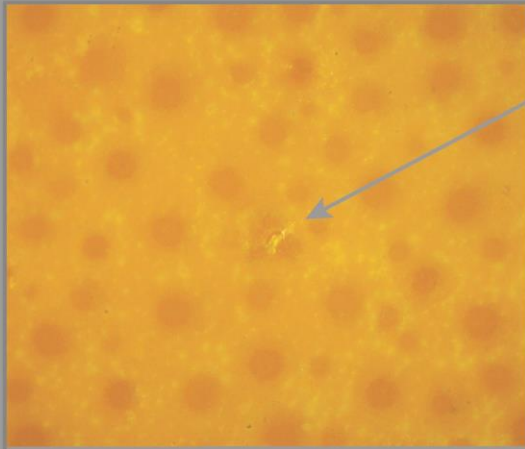
Die kostes van verpakking en vervoer is uitgesluit.

Vir bestellings, kontak asseblief Bella Thulare (bella@cri.co.za; 0137598000).

Vir enige verdere navrae, kontak Aruna Manrakhan (aruna@cri.co.za; 0137598000).



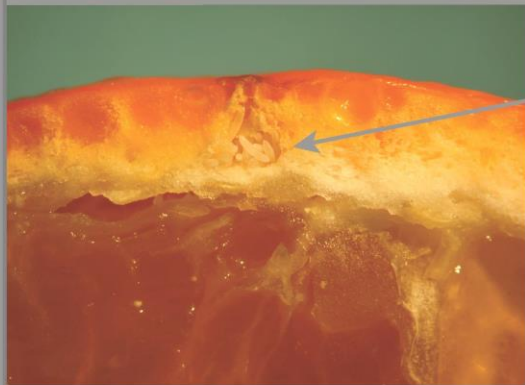
External & internal symptoms of fruit fly infestation



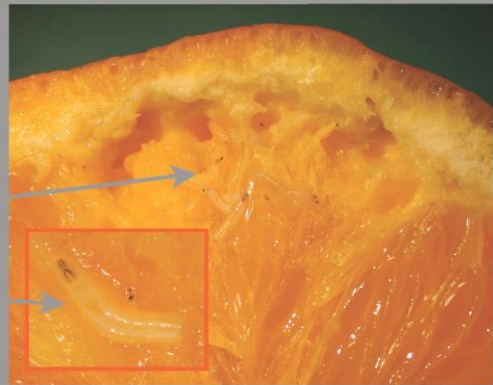
Early external symptoms of oviposition



Fruit fly larval size range: 1 mm to 12 mm



Egg pocket in rind



Young larvae

Mature larva; Flat rear end and black mouthparts

Fruit fly vs secondary fly pests found in fruit

Adult

Tephritidae (Fruit fly) larvae

Posterior spiracles with parallel slits

Adult

Drosophilidae (Vinegar fly) larva

Posterior spiracles protruding

Adult

Lonchaeidae (Silba sp.) larva

Posterior spiracles dark with angled slits

JOU HEFFING WERK VIR JOU – PRODUSENTE SE HEFFINGS WORD AANGEWEND OM DIE AKTIWITEITE VAN DIE CRI TE BEFONDS