



Combination of post-harvest fungicide treatments with the ethephon test and identification of new black spot lesions on Valencias

by
Tian Schutte (CRI)

Addition of post-harvest fungicides with ethephon

A request was received from Limpopo to look at the control of sour rot in bags after Valencias were treated with ethephon. Imazalil sulphate (0.7 g / L water) and guazatine (5 ml / L water) for the control of green mould and sour rot respectively was mixed with ethephon (8 ml / L water) (pH : 4.8) was performed to determine if it will result in phytotoxicity. No side-effects were observed after 5 days and can therefore be recommended to be used in combination with ethephon.

Post-harvest treatments and black spot lesion development

The effect of postharvest fungicides on latent citrus black spot lesion development were tested and published in an American journal showing that none of the current postharvest fungicides inhibited black spot. It can therefore be used in combination with ethephon without any side-effects. The first lesions that will be observed after a ethephon dip treatment, are red sunken lesions that turn reddish-brown over time and ends up in black hard spot lesions. If present, the first indication of the presence of latent CBS is red lesions (without pycnidia) as seen on the photo's below.

Kombinerings van na-oes swamdoderbehandelings met die ethephon toets en identifikasie van nuut ontwikkelde swartvlekletsels op Valencias

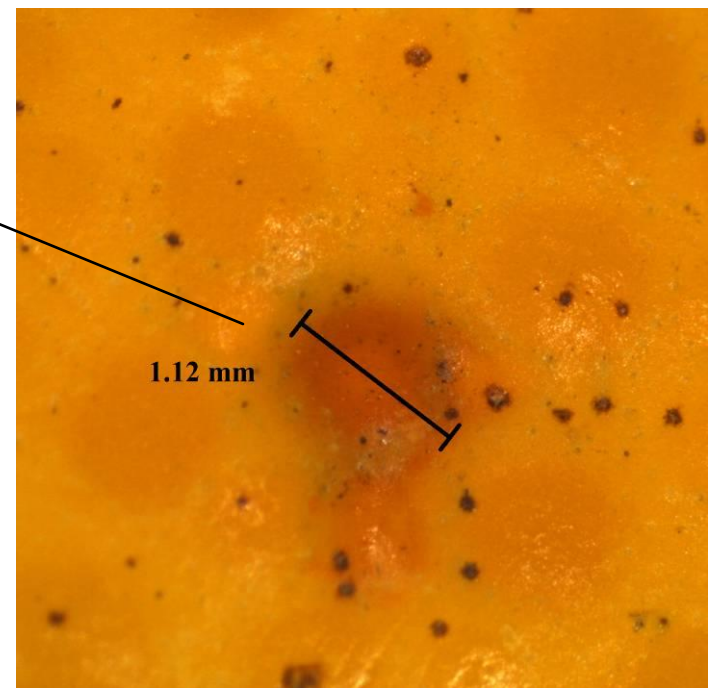
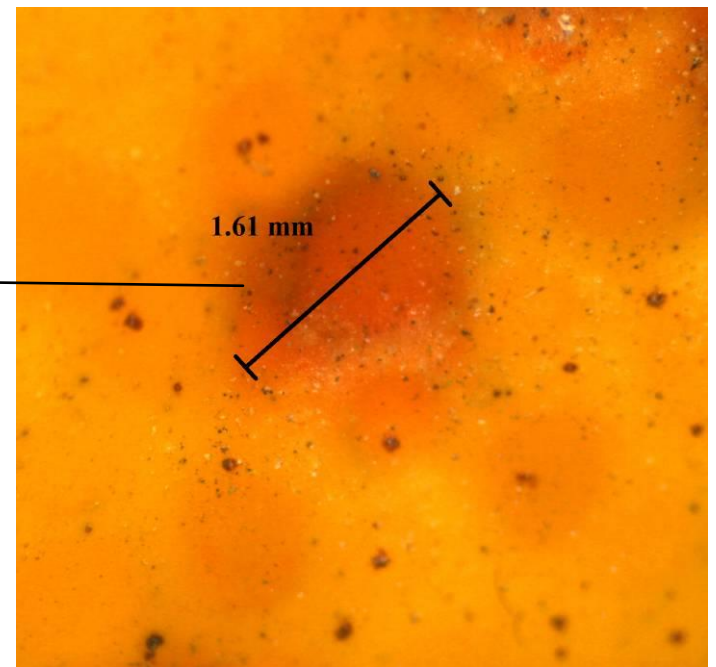
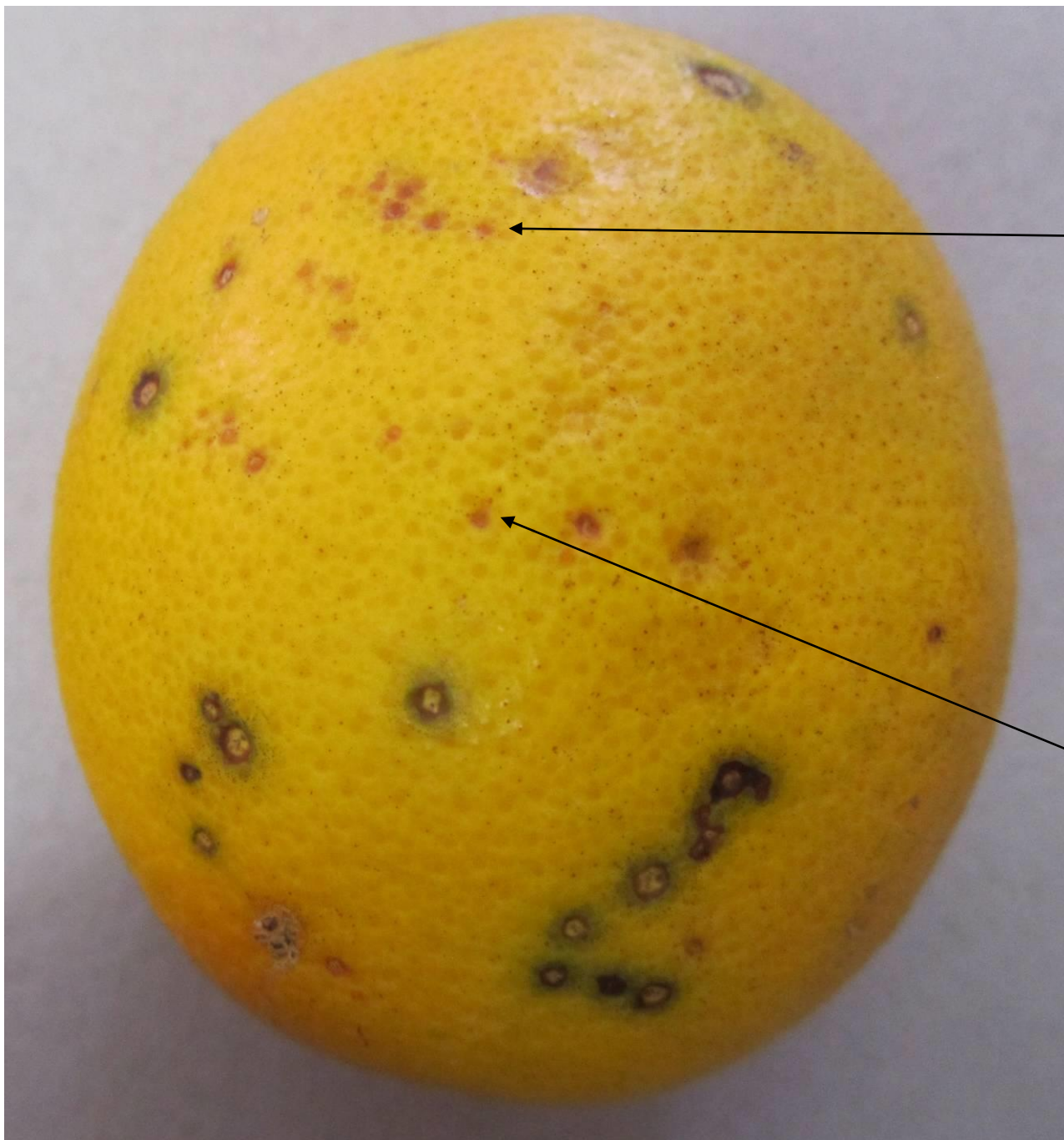
deur
Tian Schutte (CRI)

Toevoeging van na-oesswamdoders saam met ethephon

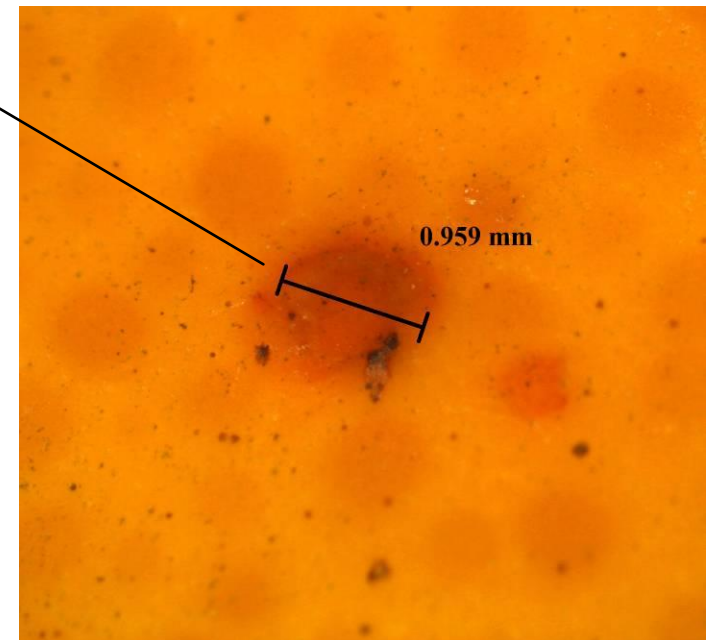
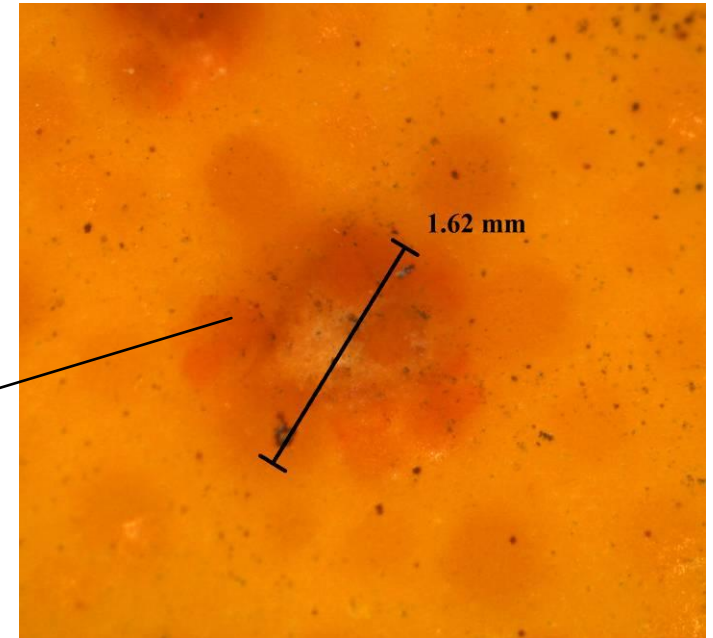
Uit Limpopo het 'n versoek gekom om te kyk na die beheer van suurvrot wat toegeslaan het in sakke Valencias nadat hulle aan die ethephon toets onderwerp was. Imazalil sulfaat (0.7 g / L water) en guazatine (5 ml / L water) vir die beheer van onderskeidelik groenskimmel en suurvrot, is saam met ethephon (8 ml / L water) gemeng (pH : 4.8) waarna die diptoets uitgevoer is om fitotoksisiteit te bepaal. Na 5 dae is geen newe-effekte waargeneem nie en kan dus in kombinasie saam met die ethephon toets gebruik word.

Na-oes behandelings en swartvlek letselontwikkeling

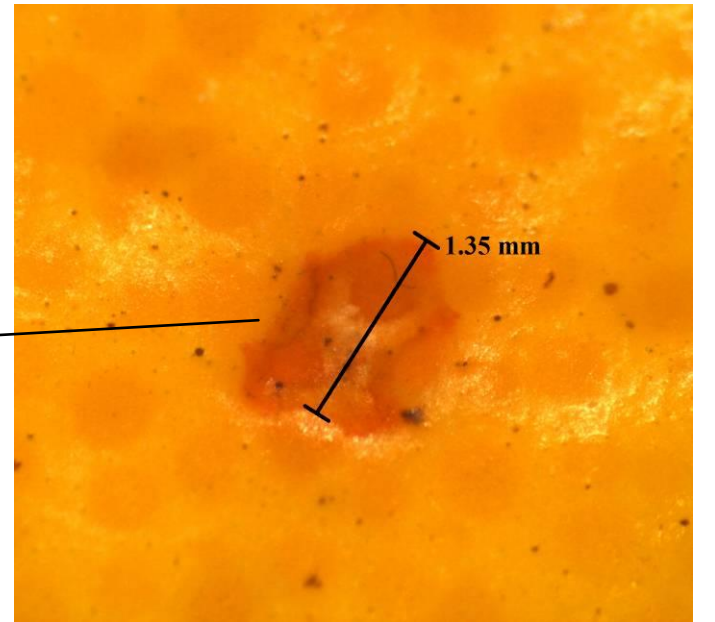
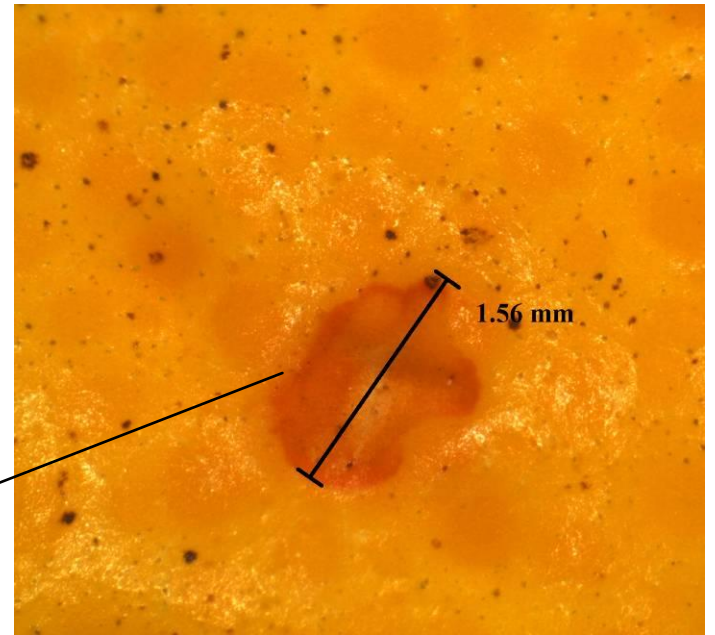
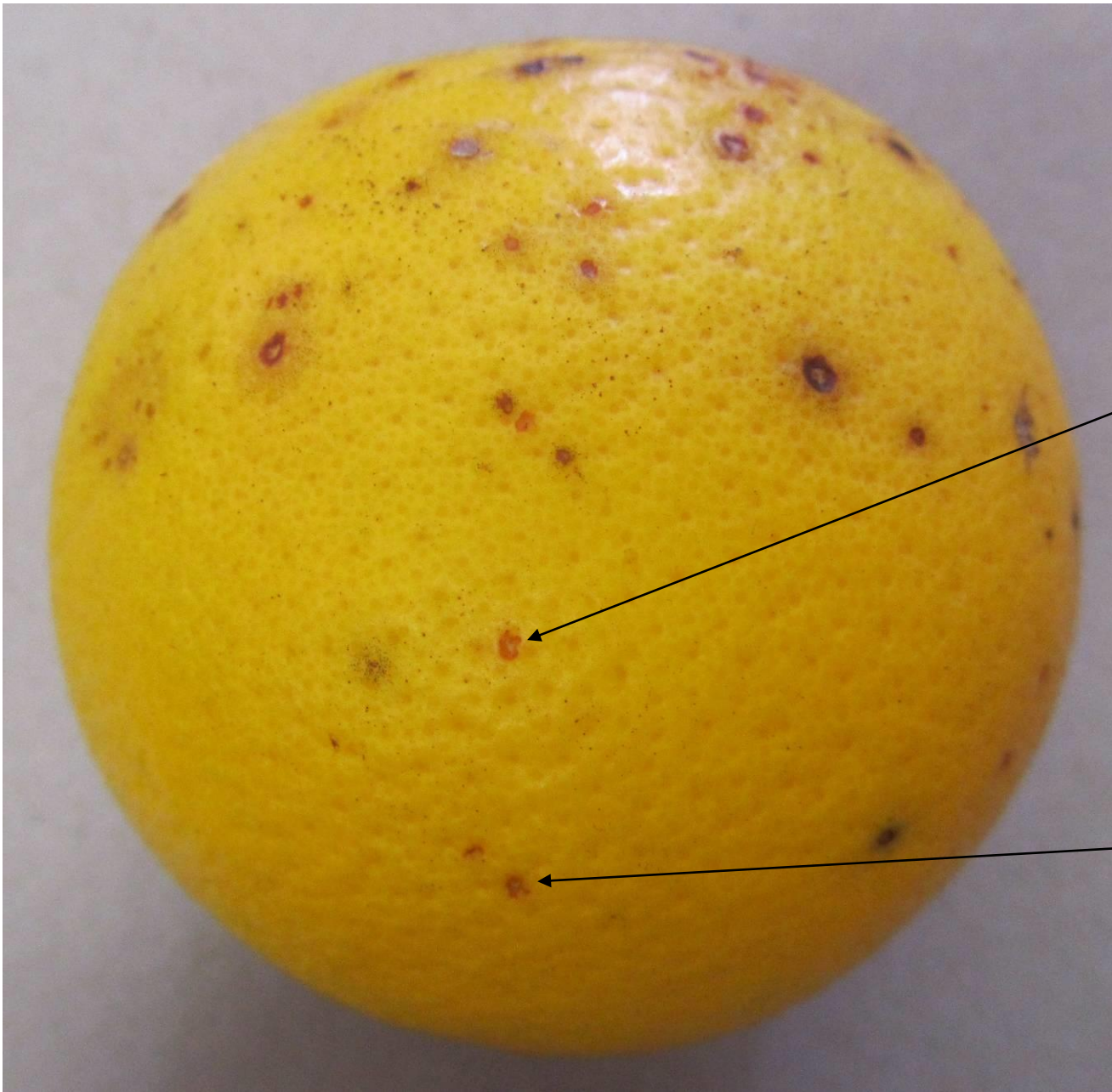
Die invloed van na-oes swamdoders op latente swartvlekletsels is reeds beproef en gepubliseer in 'n Amerikaanse joernaal wat toon dat nie een van die huidige na-oes swamdoders 'n onderdrukkende effek op swartvlek het nie en kan dus in kombinasie met ethephon gebruik word sonder newe-effekte. Die eerste letsels wat na 'n ethephon dipbehandeling waargeneem word, is rooi ingesonke letsels wat oor tyd rooi-bruin verkleur en dan in swart harde vlek letsels opeindig. Indien teenwoordig, sal die eerste indikasie van swartvlek die rooi letsels (sonder piknidia) op Valencias wees soos aangedui word in die meegaande foto's.



**YOUR LEVY WORKING FOR YOU – GROWER LEVIES ARE USED TO FUND THE ACTIVITIES OF CRI
JOU HEFFING WERK VIR JOU – PRODUSENTE SE HEFFINGS WORD AANGEWEND OM DIE AKTIWITEITE VAN DIE CRI TE BEFONDS**



**YOUR LEVY WORKING FOR YOU – GROWER LEVIES ARE USED TO FUND THE ACTIVITIES OF CRI
JOU HEFFING WERK VIR JOU – PRODUSENTE SE HEFFINGS WORD AANGEWEND OM DIE AKTIWITEITE VAN DIE CRI TE BEFONDS**



**YOUR LEVY WORKING FOR YOU – GROWER LEVIES ARE USED TO FUND THE ACTIVITIES OF CRI
JOU HEFFING WERK VIR JOU – PRODUSENTE SE HEFFINGS WORD AANGEWEND OM DIE AKTIWITEITE VAN DIE CRI TE BEFONDS**